

Cloud VPS Servers

How to Search for a File in Linux?

How to search for a file in linux?

There are different methods for locating a file in Linux. A few methods are listed below.

1. '**Find**' command

'find' searches for files in a directory hierarchy.

Syntax

To search for a file, login to your linux server and open a terminal (Applications >> Accessories >> Terminal) and type the following command.

```
find [path...] [expression]
```

eg: find . -name "filename"

. ==> current folder (search for a file in current location)

name ==> expression

filename ==> name of the file

To search for a file in the whole system.

```
find / -name "filename"
```

This will search the whole system for any files named "filename" and display their pathnames.

To find a file by name, but ignore the case of the query, type:

```
find / -iname "filename"
```

To find a file in a particular location specify the path.

```
find /path [expression] "filename"
```

eg: find /home -name "filename"

This will search the "home" folder (folder you are specifying. Here "home" folder) for any files named "filename" and shall display it.

2. '**Locate**' command

The locate command finds files by name.

Syntax

Cloud VPS Servers

locate [OPTION]... PATTERN...

eg: locate "filename"

Add '-i' option to perform a case-insensitive search.

locate -i "filename"

3. '**which**' command

Locate the executable file associated with a given command. 'which' command does not follow symbolic links.

Syntax

which -a [filename]

Options

-a Print all matching pathnames of each matching filename.

eg: which sh

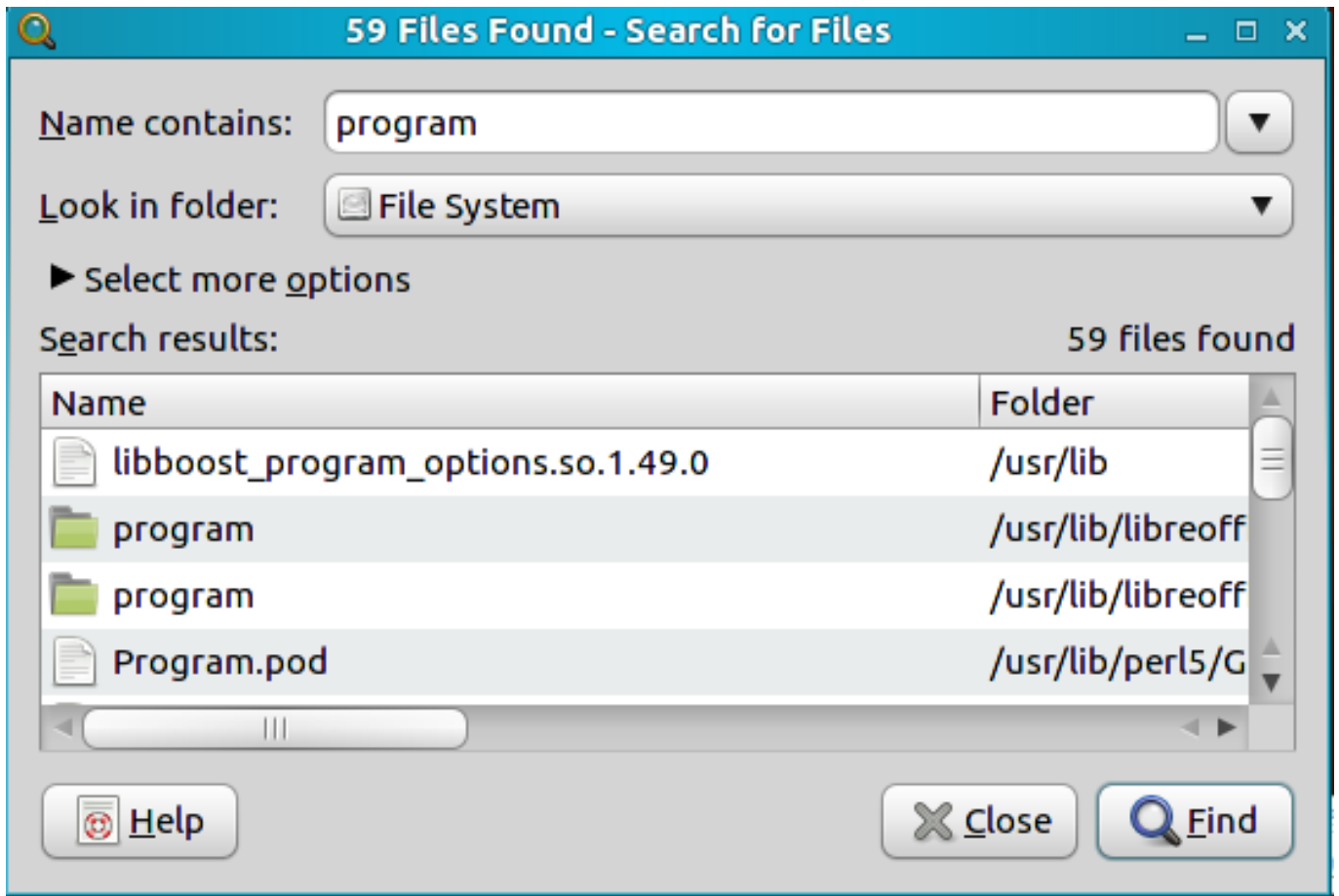
Locates the pathname of the file which would be run if the sh command were executed. On most systems, this will output:

/bin/sh

You can also search for a file in Linux server from:

1. "Start" button in main toolbar -> "Search" -> "Search for files"
2. Enter the location (folder) and "filename".
3. Click 'find' button.

Cloud VPS Servers



Unique solution ID: #1188
Author: Sherin George
Last update: 2016-06-16 01:55